

ANÁLISIS REGISTROS EOG- TELENCÉFALO

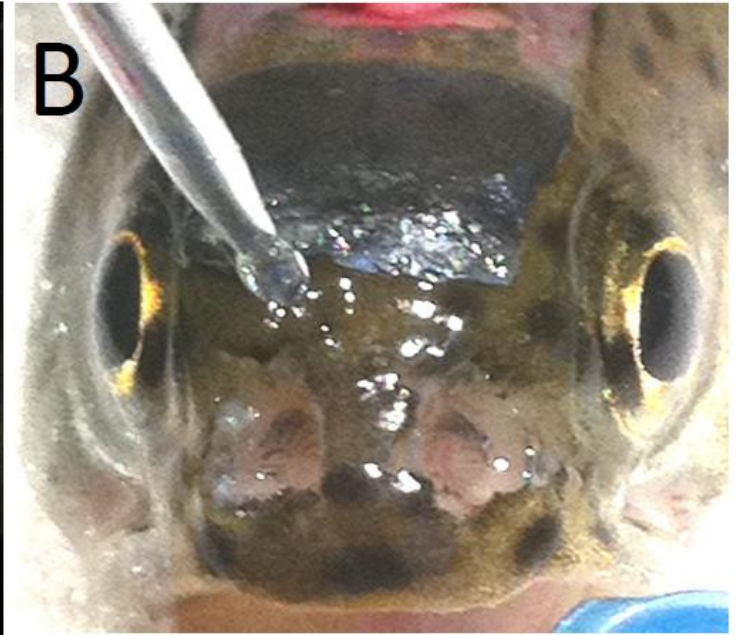
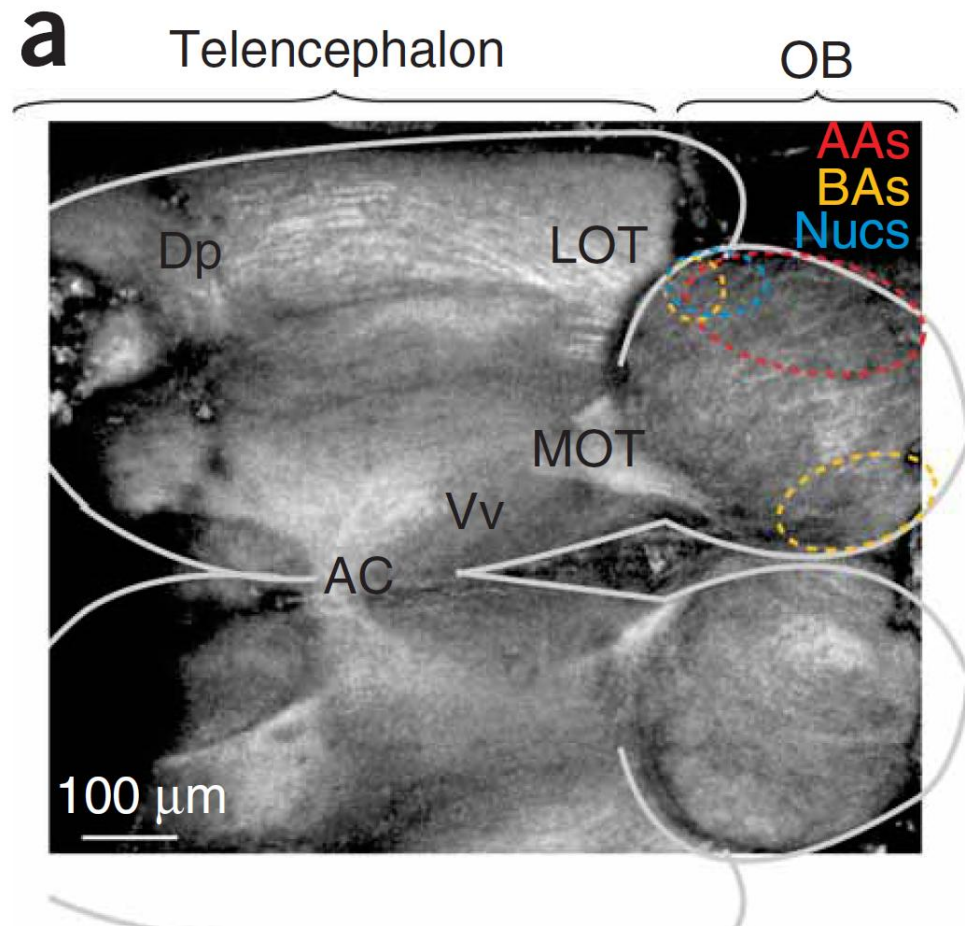
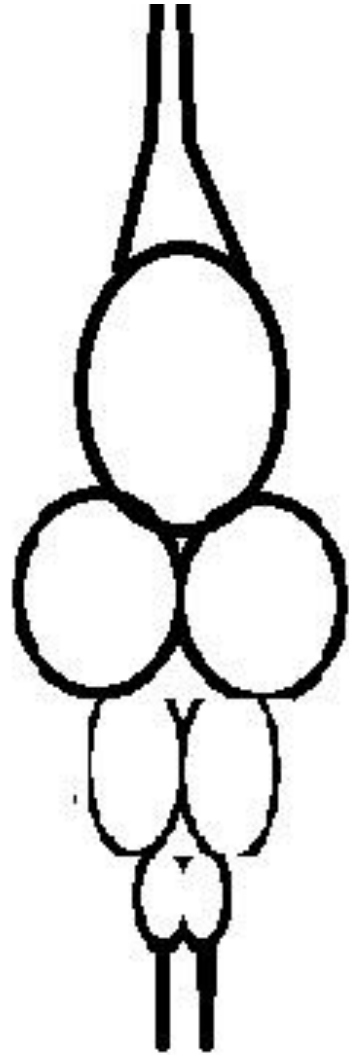


Figure 3: (A) Cranial surgery is performed in order to expose the corpus cerebellum and permit electrode access. (B) The nostrils are exposed to gain access to the olfactory epithelium. Trout are immobilized by an intramuscular injection of the neuromuscular blocking agent gallamine triethiodide (Flaxedil, 0.03 mg/100 g) and anesthetized with 0.1 mM of MS-222 (ethyl-m-aminobenzoate methane sulfonic acid). Gills are irrigated by recirculating aerated water at 15°C, and the olfactory epithelium is constantly superfused with fresh water.



Yaksi et al, 2009

